

HYDROLOGICAL PROCEDURE NO. 6

HYDROLOGICAL STATION NUMBERING SYSTEM

MARCH, 1974



JABATAN PENGAIRAN DAN SALIRAN
KEMENTERIAN PERTANIAN MALAYSIA

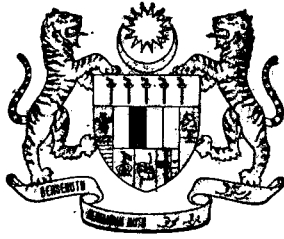
**HYDROLOGICAL STATION
NUMBERING SYSTEM**

ACKNOWLEDGEMENTS

This procedure is a part of the Hydrological Data System instituted by the Hydrology Branch of the Drainage and Irrigation Division (DID) in association with the Engineering Export Association of New Zealand Inc. (ENEX).

Published by and available from:

**The Publications Unit, Ministry of Agriculture and Fisheries,
Jalan Swettenham, Kuala Lumpur.**



HYDROLOGICAL STATION NUMBERING SYSTEM

Contributor:

V. J. BIDWELL

DRAINAGE AND IRRIGATION DIVISION

Price: \$3/-

MARCH, 1974

MINISTRY OF AGRICULTURE AND FISHERIES,
MALAYSIA

CONTENTS

	PAGE
1. Introduction	1
2. The Structure of the Numbering System	1
3. The Grid System	1
4. Type of Station	2
5. Station Number within a Grid Square	2
6. An Application of the New Station Numbering System	2
7. Summary	3
APPENDIX A ... Development of The D.I.D. Hydrological Station Numbering System	5
APPENDIX B ... Index of Old and New Station Numbers in Order of Old Numbers	7
APPENDIX C ... Index of Old and New Station Numbers in Order of New Numbers	17
Map	inside back cover.

HYDROLOGICAL STATION NUMBERING SYSTEM

1. INTRODUCTION

With the present and future expansion of the D.I.D. hydrological network and the implementation of a computerised databank the four digit numbering system has been found to be inadequate. It has been difficult to avoid duplication of station numbers as new stations are brought into operation or upgraded from manual to automatic instrumentation. For these reasons a new seven digit numbering system is being introduced. It is intended that this new system will provide several advantages to users as well as accommodating future requirements for expansion of the hydrological network. Throughout this publication the four digit system (described in Appendix A) is referred to as the old numbering system and the seven digit system as the new numbering system.

2. THE STRUCTURE OF THE NUMBERING SYSTEM

The new station number consists of seven digits which may be considered in three groups as follows:

- (i) The first four digits give the grid location according to a grid system.
- (ii) The fifth digit denotes the type of station.
- (iii) The sixth and seventh digits form the station number of a particular type of station within a grid square.

3. THE GRID SYSTEM

For the purposes of the station numbering system a grid has been constructed on increments of latitude and longitude. By this means it is hoped to avoid any confusion with the survey grids at present in use for Peninsular Malaysia and so provide a universal system applicable to any map.

The size of each grid square is six minutes of longitude by six minutes of latitude. Since Peninsular Malaysia lies at low latitudes this system will give a grid of approximately eleven kilometre increments in both directions.

The grid number consists of four digits, one pair for the northerly direction and one pair for easterly direction respectively.

For each pair of digits the first is the final digit in the number of degrees of latitude or longitude and the second is the decimal part of a degree.

Example

A location defined by longitude $102^{\circ} 46'E$ and latitude $03^{\circ} 27'N$ would lie within grid number 3427 as explained in the following:

3 ... from 03° , latitude is considered first.

4 ... $27' \div 6' = 4$. This indicates that $27'$ falls in the six minute interval between the fourth and fifth decimal parts of a degree.

2 ... from 102° , longitude is considered second.

7 ... $46' \div 6' = 7$. This indicates that $46'$ lies between the seventh and eighth decimal part of a degree.

The grid system is shown on the attached map of Peninsular Malaysia. This map also shows the location of part of the Primary Rainfall Station Network inserted for illustrative purposes. The three digit numbers next to each station location are the type and grid station numbers which are explained in a subsequent section.

To illustrate the use of the grid number consider the station 098 at Telok Anson. This station lies in grid square 4010 and thus the full station number is 4010098.

Note that the grid square is referenced in order of north and then east i.e. 40 north 10 east.

4. TYPE OF STATION

The fifth digit of the station number denotes the type of the hydrological station according to the following:

Type number	Description
0 }	Rainfall station
1 }	
2	Climate station
3	Evaporation station
4	River station
5	Sediment station
6	Water quality station
7	Ground water station
8	Soil moisture station
9	Not yet allocated

N.B.—"Climate station" refers to stations where climatic variables other than rainfall or evaporation are measured e.g. temperature, sunshine hours, relative humidity.

5. STATION NUMBER WITHIN A GRID SQUARE

The sixth and seventh digits of the station number give the number of a particular type of station within the particular grid square. This will be called the grid station number. Hence there may be 100 stations of one type within one grid square of size 11km. × 11km. without duplication of station number. This amount is considered to be ample for future expansion of the hydrological network.

There are a few rules with regard to the grid station number as follows:

- (i) Stations of different types but having the same location will have the same grid station number. For example, a rainfall recorder and an evaporation pan located at the same site within grid square 3427 would both have the same grid station number, say, 26 and thus have station numbers 3427126 and 3427326 respectively. Only the type number is different.
- (ii) Existing stations will retain the final two digits of the old station number as their new grid station number. For example, a station with number 4033 will retain 33 as the sixth and seventh digits in its new station number. This rule is to assist with the station number conversion and utilise familiarity with the old number.
- (iii) Newly established stations will be given grid station numbers beginning at 01 and continuing in order of date of establishment of the station. Numbers previously used will of course not be duplicated.

The above rules are general and there are many exceptions due to change of station location and duplication of old station numbers. A complete list of existing stations with their corresponding new numbers is given in Appendix B. This list should be referred to for any station number conversion. Comments are provided in this list only for stations where ambiguity may occur. Some recently established stations have no old station number and hence blank spaces have been left in the old number lists, in Appendices B and C, corresponding to their new numbers.

6. AN APPLICATION OF THE NEW STATION NUMBERING SYSTEM

Apart from providing a comprehensive numbering system for the hydrological stations the procedure can be used to assist the data user in defining his requirements. The two parts of the procedure which can be used for this purpose are:

- (1) The Hydrological Station Grid Map of Peninsular Malaysia inside the back cover.
- (2) Appendix C: The Index of Old and New Station Numbers in Order of New Numbers. This index is up to date at the time of publication, hence stations installed since then are not included.

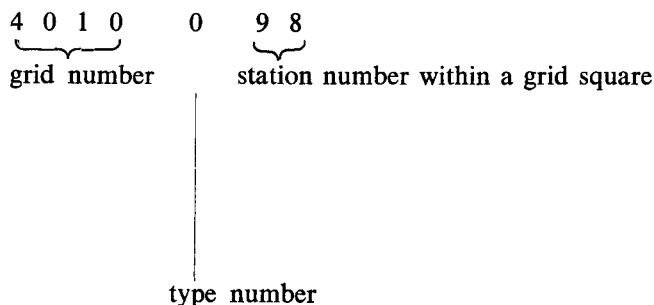
A prospective data user with an interest in a particular area can ascertain the existence of hydrological stations in the particular area by means of the following.

- (1) Note the grid numbers of the grid squares covering the area of interest. The grid numbers are obtained from the margin of the map, remembering that the North—South digit pair is read first.
- (2) By referring to Appendix C the hydrological stations can be found which have the required grid numbers as their first four digits. The fifth digit of the station number is the type number and thus the user can determine the type of hydrological station installed in the area of interest.

The use of a map grid in conjunction with an index means that updating is easier as only the index is altered. Also the map is not cluttered with numbers and symbols for the 1000 (approx.) hydrological stations now in use.

7. SUMMARY

The new station numbering system can be summarised as follows:



Grid number 40 10
 └──┘ └──┘
 North East

Type number

- | | | |
|---|---|-------------------|
| 0 | } | Rainfall |
| 1 | | |
| 2 | | Climate |
| 3 | | Evaporation |
| 4 | | River |
| 5 | | Sediment |
| 6 | | Water quality |
| 7 | | Ground water |
| 8 | | Soil moisture |
| 9 | | Not yet allocated |

APPENDIX A

THE DEVELOPMENT OF THE DID HYDROLOGICAL STATION NUMBERING SYSTEM

Prior to computer processing of hydrological data in Peninsular Malaysia the hydrological stations were given location names (as in the D.I.D. publication—"Hydrological Data—Streamflow Records 1910-1940") or location names with State numbers (D.I.D. publication—"Hydrological Data—Rainfall Records 1879-1958").

The Four Digit Numbering System

With the introduction of computer processing it was felt necessary to implement a more rigorous system of station numbering. A four digit numbering system, referred to as the "old system" throughout this procedure, was constructed according to the following rules:

The first digit denotes the State as follows:

0	...	Kelantan
1	...	Kedah/Perlis
2	...	Penang/Province Wellesley
3	...	Perak
4	...	Selangor
5	...	Negeri Sembilan
6	...	Melaka
7	...	Johore
8	...	Pahang
9	...	Trengganu

The second digit indicates the type of station:

0	}	...	manual raingauge station
1			
2	...	automatic rainfall recording station	
3	...	evaporation station	
4	...	manual reading water level station	
5	...	automatic water level recording station	

The third and fourth digits were derived as follows:

- (a) For a rainfall station, these two digits are the station number within a State. Thus there could be a maximum of only 199 manual raingauge stations in each State (001-199). Furthermore, when a manual raingauge station 3001, for example, was converted to an automatic recording station, the number 3201 was assigned to it. This would mean that for the State of Perak, only half the possible number of manual raingauge stations could be converted to automatic recording stations without duplication of station number. For example stations 3001 and 3101 would have both become 3201 upon upgrading to automatic status.
- (b) For a water level station, the third digit is the river number within a State. The fourth digit indicates the location of a station on a particular river in ascending order going upstream. The system could thus accommodate a maximum of nine rivers for each State and nine water level stations on each river.

Two publications on hydrological data were issued using this numbering system:

"Hydrological Data—Streamflow Records 1941-1960".

"Hydrological Data—Rainfall Records 1959-1965".

Modification of the Four Digit Numbering System

Due to the limitations of the system just described, a change was made by putting an asterisk at the end of the station number of all automatic recording stations irrespective of the type of station. An automatic rainfall station then reverted from type 2 to its former manual type 0 or 1 with the addition of the asterisk. Thus, for example, a manual raingauge station 4070 which had been upgraded to automatic operation with number 4270 would be given the number 4070* under this system. An automatic water level recording station 4512, for example, became 4412*.

The publication "Hydrological Data—Streamflow Records 1960-65" was published using this system.

The following publications:

"Hydrological Data—Streamflow Records 1965-70".

"Hydrological Data— Rainfall Records 1965-70" will be published also using this system but with a cross reference to the new seven digit station numbering system described in this procedure.

APPENDIX B

INDEX OF OLD AND NEW STATION NUMBERS
IN ORDER OF OLD NUMBERS

<i>Old No.</i>	<i>New No.</i>	<i>Remarks</i>	<i>Old No.</i>	<i>New No.</i>	<i>Remarks</i>
0001	5718001		0065	6122065	
0002	5819002		0066	6121066	
0003	5919003		0067	6121067	
0004*	6019004		0068	6122068	
0007	5821007		0071	6023071	
0008	5920008		0072	6023072	
0009	5921009		0073	6023073	
0010	6021010		0074	6024074	
0011	5920011		0075	5922001	Melor Agriculture Stn.
0012	6020012		0075	5922075	Melor Penggawa's Office
0013	6021013		0076	5823076	
0014	6120014		0077	5823077	
0015*	6121015		0078	5724001	Sek. Keb. Wakaf Raja, Bt. Yong
0024	5119024		0078	5724002	Kg. Wakaf Raja
0025*	5120025		0078	5724078	Balai Polis Stn. Bukit Yong
0026	4720026		0079*	5824079	
0027*	4819001	Gua Musang	0080	5824080	
0027*	4819027	Gua Musang Telemetric	0081	5923081	
0030	5020030			5820005	Pejabat Pertanian Batang Merbau
0031	5220031	Kemubu Railway Stn.		5823001	Tiga Daerah Headworks
0031	5617031	Kuala Sg. Yong	0305	5820305	Pejabat Pertanian Batang Merbau
0032	5717033		0361	6021361	Pasir Mas Pumphouse
0033	5618033	Jeli Forest Checking Stn.	0377	5823301	Tiga Daerah Headworks
0033*	5718033	Jeli Telemetric	0411*	6019411	
0035	5518035		0421*	6022421	
0036	5419036		0441*	6122441	
0037	5320037		0442*	5721442	
0038	5320001	Dabong Agriculture Stn.	0443*	5320443	
0038*	5320038	Dabong Telemetric	0444	5521444	Sg. Kelantan at Kuala Krai
0039	5320002	Kuala Gris Estate	0445*	5119445	
0039	5320039	Bukit Abu Railway Stn.	0448*	5717448	
0044*	5322044		0452	5222452	Sg. Lebir at Kg. Tualang
0045	5322001	Manek Urai Police Stn.	0453	5322453	
0045	5322045	Manek Urai Railway Stn.	1001*	6603001	
0046	5422046		1002	6602002	
0047*	5522047		1003	6502003	
0048	5622048		1004	6501004	
0049	5521049		1005	6501005	
0050	5521050		1006	6402006	
0051	5621051		1007	6402007	
0052	5621052		1008*	6401001	Kg. Behor, Kangar
0053	5621053		1008*	6401008	J.P.T. Store, Kangar
0054	5721001	Temangan Local Council	1009	6301009	
0054	5721054	Temangan Railway Stn.	1010	6502010	
0055	5720055		1011	6202001	Kuala Sanglang Tidal Gate
0056	5723056		1011	6202011	Kg. Sanglang
0057*	5722057		1021	6302021	
0058	5721002	Tebing Tinggi Estate	1022	6204022	
0058	5721058	Tanah Merah Railway Stn.	1023*	6204023	Jitra Test Plot Stn.
0059	5821059		1024	6203024	
0060	6021060		1025	6403025	
0061*	6021061	Pasir Mas Pumphouse	1026	6304026	
0062	6022062		1027	6304027	
0063	6121063		1028	6204028	
0064*	6122064				

<i>Old No.</i>	<i>New No.</i>	<i>Remarks</i>	<i>Old No.</i>	<i>New No.</i>	<i>Remarks</i>
1029	6305029		1111*	6397111	J.P.T. Quarters, Padang Masirat, P. Langkawi
1031*	6306031		1112	6397112	
1032*	6207032	Pedu Dam	1121	6398121	
1033	6207033		1131	6398131	
1034*	6106034			6203124	Jitra (Telaga Batu)
1035*	6206035			6303122	Megat Dewa
1036	6205036			5903151	Kuala Sala Tidal Gate
1037	6105037	Gajah Mati		5904152	Simpang Tiga, Sg. Limau
1038	6105038		1308	6401308	Kg. Behor, Kangar
1039	6204039		1311	6397311	J.P.T. Quarters, Padang Masirat, P. Langkawi
1042	5905042		1312	6202301	Kuala Sanglang Tidal Gate
1043	5904043		1322	6303322	Megat Dewa
1044	6005044		1323	6204323	Jitra Test Plot Stn.
1045	6004045		1324	6203324	Jitra (Telaga Batu)
1047*	6103047		1332	6207332	Pedu Dam
1048	6103048		1337	6105337	Gajah Mati
1049	6003049		1351	5903351	Kuala Sala Tidal Gate
1051	5904051		1352	5904352	Simpang Tiga, Sg. Limau
1052	5803052		1362	6108362	Muda Dam
1053*	5804053		1366	5806366	Jeniang
1054	5704054			6108301	Muda Housing Complex
1055	5704055		1410	5606410	Sg. Muda at Syed Omar Bridge
1056	5704056	Sek. Menengah Gurun	1411	6108411	Sg. Muda at Muda Dam
1056	5804056	Gurun Quarry	1414*	5806414	
1057	5704057		1415*	6007415	
1058	5704058		1420	6204420	Sg. Padang Terap at Pelubong Headworks
1059	5604001	J.P.T. Store Sg. Petani	1421*	6204421	
1059	5604002	Kawasan Jabatan Penjara Sg. Petani	1427	6207427	Sg. Pedu at Pedu Dam
1059	5604059	Rumah Sakit Sg. Petani	1431	6502431	
1062	6108001	Muda Housing Complex	1432	6502432	
1062	6108062	Muda Dam	1433	6502433	
1063*	6007063		1434	6402434	
1065	5806065		1435	6402435	
1066*	5806066	Jeniang	2001*	5302001	
1067	5807067		2002	5302002	
1069*	5808001	61st mile, Jln. Baling	2011	5402011	
1069	5808069	62nd mile, Jln. Baling	2021	5202021	
1070	5808070		2022*	5303022	
1071	5708071		2031	5503031	
1072	5609072		2033	5505033	
1073	5609073		2034	5503034	Permatang Binjai
1074	5608074		2034	5504034	Permatang Sintok
1076	5507076		2035*	5504035	
1077	5606077		2041	5404041	
1078	5506078		2042	5403042	
1079	5507079		2043*	5404043	
1080	5407080		2044	5404044	
1081	5406081		2045	5304045	
1082	5506082		2046	5304046	
1083	5406083		2047	5304047	
1084	5505084		2048	5204048	
1085	5504085		2049	5204049	
1091	5305091		2050	5205050	
1092	5305001	Kampung Dusun	2051*	5105051	
1092	5305092	Bt. Besar, Kulim	2052	5104052	
1101	5307101		2053*	5303053	
1102	5206102			5504032	Bumbong Lima Pumphouse
1103	5206103			5504332	Bumbong Lima Pumphouse
1104	5106104		2412*	5505412	Sg. Muda at Victor-Estate
1105	5105105				
1106	5105106				

<i>Old No.</i>	<i>New No.</i>	<i>Remarks</i>	<i>Old No.</i>	<i>New No.</i>	<i>Remarks</i>
2413*	5506413	Sg. Muda at Batu Pekaka	3062	5610062	
2416	5506416		3063*	5610063	
2417	5506417		3066*	5411066	
2421*	5405421		3067*	5412067	
2422*	5204422		3068	5411068	
3002	5207002		3069*	5210069	
3003*	5106003	Dusun Limau Cableway	3070	5109070	
3003	5206003	Selama Dispensary	3071	5009071	
3004	5106004		3072	4909072	Chendroh Dam
3005	5108005		3073	4909073	
3006	5107006		3075	4811075	
3007	5107007		3076*	4810076	Kg. Pulau Mentimum
3008	5106008		3076	4911076	Kg. Lintang Police Station
3009	5006009	Hock Estate Alor Pongsu	3077	4910077	
3010	5005010		3078	4811078	
3011	5104011		3079	4810079	
3012	5104012		3080	4810080	
3013	4907013	Lingerwood Estate Krian	3081	4710081	
3013	4908013	Sempeneh Headworks Batu Kurau	3082	4708082	
			3083	4708083	
3014	4807014		3084*	4708084	Talang Headworks, Kuala Kangsar
3015	4807015				
3016*	4807016		3084*	4709001	J.P.T. Kuala Kangsar
3017	4907017		3084	4709084	Kuala Kangsar Hospital
3018*	4908018		3085	4609001	Empang Lempor
3019	4907019		3085*	4609085	Senggang Estate
3020	5007020		3086	4508086	
3021	5006021	Bukit Merah Reservoir	3087	4508087	
3022	4906022		3088	4509088	
3023	4905023		3090	4409090	
3025*	5005001	J.P.T. Bagan Serai	3091*	4409091	
3025	5005025	Bagan Serai Waterworks J.K.R.	3092	4309092	
3026	4904026		3093	4209001	Telok Sareh Pumphouse
3027	5004027		3093*	4209093	Telok Sena, J.P.T. Trans-Perak
3028	5003028	Tg. Piadang Padi Test Stn.	3094	4109094	
3029	5007029		3095	4109095	
3031	4807031		3096	4009096	
3032	4806032		3097	4010097	
3033	4707033		3098*	4010001	J.P.T. Telok Anson
3034	4707034		3098	4010098	Telok Anson Hospital
3035	4707035		3099	3910099	
3036	4507036		3100	3909100	
3037	4507037		3101	3908101	
3038	4407038		3102	4008102	
3039	4306039		3103	3907103	
3040	4306040		3104	3909104	
3041	4307041		3111*	4511111	
3042	4306042		3112	4610112	
3043	4307043		3113	4711113	
3044	4207044		3114*	4611114	
3045	4206045		3115	4611115	
3046	4206046		3116*	4510116	J.P.T. Kinta Ipoh
3047	4106047	Pundut Estate	3116	4610116	Ipoh Hospital
3047	4205047	Pasir Bogak	3117	4510117	
3048*	4207048		3118	4511118	
3049	4406049		3119*	4411001	Gopeng Dam
3053	5613053		3119	4411119	Gopeng Hospital
3054*	5513054		3120	4410120	
3058*	5313058		3121	4409121	
3059*	5412059		3122	4410122	
3060*	5412060		3123	4410123	
3061*	5710061		3126	4311126	

<i>Old No.</i>	<i>New No.</i>	<i>Remarks</i>	<i>Old No.</i>	<i>New No.</i>	<i>Remarks</i>
3127	4311127		3443*	4809443	
3128	4212128		3444*	4810444	
3129	4110129		3445	4911445	
3130	4313130		3446*	5411446	
3131	4213131		3447*	5412447	
3132	4213132		3451	4011451	
3133	4212133		3452	4012452	
3134	4111134		3453*	4012453	Sg. Bidor at Bidor Tin Deviation
3135	4111135		3453*	4213453	Sg. Woh at U/S Sg. Telom
3136	4110136		3454*	4112454	Sg. Bidor at Bidor
3137*	4111137		3455*	4111455	
3138	4010138		3456*	4112456	
3139	4011139		3457	3911457	
3141	4112141		3458*	3913458	
3142	4012142		3459*	4112459	
3143*	4012143		3461*	4410461	
3144	4011144		3462	4510462	
3145	3913145		3463*	4611463	
3146	3913146		3464*	4311464	
3147	3913147		3465*	4410465	
3149	3911149		3466*	4610466	
3150	4010150		3467*	4212467	
3151*	3615001	Pekan Tanjong Malim	3468*	4511468	
3151	3615151	Tanjong Malim Hospital		4310401	Sg. Kinta at Weir G, Tg. Tualang
3152	3714152		4001	3615001	
3153	3714153		4002	3615002	
3156	3814156		4003	3713003	
3157	3814157		4004*	3613004	
3158	3813158		4005	3613005	
3160	3711160		4006*	3710006	Bagan Terap Pumphouse
3162	3809162		4008	3709008	
3163	3808163		4009	3809009	
	5207001	Selama, J.K.R. Reservoir	4011	3710011	Parit Enam, Sg. Besar
	4611001	National Stud Farm, Ulu Kinta	4012	3609012	
	5005002	Alor Pongsu Overseer's Quarters	4013	3609013	J.P.T. Office, Sg. Besar
	5005003	I.I.'s Quarters Jln. Anderson, Bagan Serai	4014	3610014	
	4207001	M.M.S. Sitiawan	4015	3510015	
3309	5005302	Alor Pongsu Overseer's Quarters	4016	3411016	
3319	4411301	Gopeng Dam	4017*	3411017	
3321	5006321	Bukit Merah Reservoir	4018	3614018	
3325	5005303	I.I.'s Quarters Jln. Anderson, Bagan Serai	4021	3517021	
3328	5003328	Tanjong Piandang Padi Test Stn.	4022*	3516022	Kuala Kubu Baru Reservoir
3372	4909372	Chendroh Dam	4023	3516023	
3384	4708384	Talang Headworks, Kuala Kangsar	4024	3315024	
3393	4209301	J.P.T., Telok Sena	4025	3416025	
3398	4010301	J.P.T., Telok Anson	4026	3416026	
3413*	3814413		4027	3515027	
3414*	3813414		4028	3316028	
3415	3814415		4029	3414029	
3416*	3814416		4030	3414030	
3421*	5007421		4031*	3414031	
3422	4907422		4032	3315032	
3423	5007423		4033	3315033	
3431*	5106431		4034	3315034	
3432*	5206432		4035	3215035	
3433	5106433		4036	3315036	
3441*	3907441		4037	3314037	
			4038	3314038	
			4039	3313039	
			4040	3313040	

<i>Old No.</i>	<i>New No.</i>	<i>Remarks</i>	<i>Old No.</i>	<i>New No.</i>	<i>Remarks</i>
4041	3412041		4118	2814118	
4042	3312042		4120	2914120	
4043	3313043		4121	2913121	
4044	3312044		4122	2913122	
4045	3312045		4131	2615131	
4051	3215051		4132	2615132	
4052	3216052		4133	2717133	
4053	3115053		4134	2617134	
4054	3214054		4135	2616135	
4055	3214055			3217002	Genting Kelang (Flood Warning)
4056	3313056			3119001	Sg. Lui Std. Catchment, Sawah
4057	3213057			3119002	Sg. Lui Std. Catchment, Lallang
4058	3213058			3119003	Sg. Lui Std. Catchment, Lawin (Bkt.)
4059	3113059			3314001	J.P.T. Pumphouse, Jaya Setia
4060	3313060			2913001	Telok Gong, Drainage Gate
4061	3216061			3216001	Kg. Sg. Tua (Flood Warning)
4062	3216062			3216002	F.R.I. Kepong, Semaian
4063	3317063	16th mile Ulu Gombak, J.P.T.		3216003	F.R.I. Office, Kepong (Flood Warning)
4063*	3317001	16th mile Ulu Gombak, J.K.R.		3217001	10th mile Gombak J.P.T. Headworks (Flood Warning)
4064	3217064			3317001	Ulu Gombak 13th mile (Flood Warning)
4065	3217065			3116001	J.P.T. Selangor Office (Flood Warning)
4066	3117066			4306	3710306 Bagan Terap Pumphouse
4067	3217067			4310	2818310 Kg. Jln. Enam Kaki, Beranang
4069	3118069			4311	3710311 Parit Enam, Sg. Besar
4070*	3117070	J.P.T. Research Stn. Ampang		4313	3609313 J.P.T. Office, Sg. Besar
4071	3117071			4315	2815301 J.P.T. Sg. Manggis
4072	3116072			4322	3516322 Kuala Kubu Baru Reservoir
4073	3116073			4370	3117370 J.P.T. Research Stn. Ampang
4074	3015074			4411*	3813411
4075	3016075			4412*	3615412
4076	3016076			4421*	3414421
4077	2916077			4422*	3516422
4078	3015078			4423*	3517423
4079	3115079			4426*	3616426
4080	3015080			4430	3116430 Sg. Klang at Sulaiman Bridge, K.L.
4081	3014081			4431*	3015431
4082	3015082			4432*	3116432 Sg. Klang at Market St., K.L.
4083	3014083			4433*	3116433
4084	3014084			4434*	3116434
4085	3114085			4435*	3217435
4086	3114086			4436*	3317436
4087	3113087			4437*	3115437
4089	3014089			4438	3117438 Sg. Klang at Kg. Baharu
4090*	3014090			4439	3216439 Sg. Batu at Kg. Tua
4101	3218101			4441*	2816441
4102*	3118102	Sg. Lui Std. Catchment, Sek. Keb.		4442*	2917442
4104	3017104			4443*	2918443
4105*	2917105			4444*	3017444
4106	2917106			4445*	3118445
4107	3018107			4447*	3118447
4108	2918108			4448*	2817448
4109	2918109				3117401 Sg. Klang at Cambell Rd.
4110*	2818110	Kg. Jln. Enam Kaki, Beranang		5001	2819001
4111	2917111			5002	2819002
4112	2816112			5003	2818003
4114	2717114			5004	2818004
4115*	2815001	J.P.T. Sg. Manggis			
4115	2815115	Brooklands Estate			
4116	2915116				
4117	2814117				

<i>Old No.</i>	<i>New No.</i>	<i>Remarks</i>	<i>Old No.</i>	<i>New No.</i>	<i>Remarks</i>
5005	2718005		5422	2719422	
5011	2820011		5423	2520423	
5012*	2920012		5424*	2619424	
5013	2921013		5431	3022431	
5014*	2820014		5432	2920432	
5016	3020016		5436*	3120436	
5017	2922017		6001	2423001	
5018	2922018		6002	2422002	
5020*	3122001	Simpang Durian Triang Ilir	6003	2421003	
5020	3122020	Simpang Durian Estate	6004*	2322004	
5021	3122021		6005	2320005	
5032	2617032	Overseer's Quarters, Chuah	6006	2321006	
5033	2517033		6007*	2323007	
5034	2418034		6008	2221008	
5041	2720041	Kg. Bahru Pantai	6009	2221009	
5041	2820041	Seremban Waterworks (Pantai Intake)	6010	2222010	
5042*	2820042	Pantai Headworks, Approx. Same Loc. as 2820041	6011	2222011	
5043*	2719001	J.P.T. Store Sikamat, Seremban	6022	2223022	
5043	2719043	Astana Hinggap Seremban	6023	2223023	
5044	2618044		6024	2123024	
5046	2519046		6031	2424031	
5047*	2620047		6032	2324032	
5048	2620048		6033	2324033	
5049	2520049		6034	2325034	
5050	2521050		6035	2324035	
5052	2420052		6036	2224036	
5053	2420053		6037	2124037	
5054	2419054		6038*	2224038	
5061	2522061		6411*	2122411	
5062	2422062		6412*	2222412	
5073	2721073		6413	2322413	
5074*	2722001	Residential Area, Kuala Pilah	6414	2322414	
5074*	2722002	Kg. Sawah Lebar	6415*	2322415	
5074	2722074	Kuala Pilah Hospital	6432*	2224432	
5075	2723075		7002	2626002	
5076	2724076		7003	2526001	Fortrose Estate, Gemas
5078	2622078		7003	2526003	Gemas Estate Home Div.
5079	2622079		7004	2527004	
5082	2724082		7005	2426005	
5083*	2725083		7007	2527007	
5084	2625084		7008	2430008	
5085	2623085		7009*	2330009	
5086	2524086		7010	2429010	
5087	2424087		7011	2428011	
5088	2623088		7012*	2528012	
5089	2525089		7013	2428013	
5091	2823091		7014	2528014	
5092	2823092		7016	2228016	
5093	2824093		7017	2127017	
5094	2725094		7018	2127018	
5095	2824095		7019	2226019	
5096	2924096		7020	2326020	
5098	3023098		7021	2325021	
5332	2617332	Overseer's Quarters, Chuah	7022	2326022	
5343	2719301	J.P.T. Store, Sikamat, Seremban	7023	2326023	
5412*	2625412		7024	2126024	
5413	2722413		7025	2127025	
5415	2525415		7026	2225026	
5416	2524416		7027	2225027	
5421*	2519421		7028	2125028	
			7029	2025029	
			7030	2025030	

<i>Old No.</i>	<i>New No.</i>	<i>Remarks</i>	<i>Old No.</i>	<i>New No.</i>	<i>Remarks</i>
7031	2025031		7118	1439118	Buloh River Estate, J.B. (WS174782, 1972-)
7041	2125041		7121	1933121	
7042*	2125042	Kesang Tasek Pumphouse	7122	1834122	
7043	2225043		7123	1833123	
7051	1926051		7124*	1834124	
7052	1926001	Parit Jawa Gate, Muar	7125	1735125	
7052	1926052	Parit Jamil Gate Site, Muar	7126	1736126	
7053	1927053		7127*	1737127	
7054	2027054		7128	1737128	
7062	2230062		7129	1738129	
7064	1929064		7130	1739001	27th mile Jln. J.B./Mersing (Was Listed as 71301)
7065	1928065		7130	1739130	Permatang Estate, Kota Tinggi
7067	2031067		7131	1738131	
7068	2130068		7132	1639132	
7069	2031069		7133	1637001	L.K.T.P. Ulu Tiram/Ulu Terbau
7070	2030001	Sek. Meng. Inggeris, Yong Peng	7133	1637133	Ulu Tiram Estate
7070	2030070	J.K.R. Waterworks, Yong Peng	7134	1539134	
7071	2032071		7135	1540135	
7072*	1931001	2nd mile Brizay Bridge, Yong Peng	7136	1539136	
7072	1931072	Ayer Itam Agriculture Stn.	7137	1541137	
7073	1931073		7138	1541138	
7074	1831074		7139	1541001	Kangkar Chemara
7075	1830075		7139*	1541139	Johor Selica
7076	1930076		7141	1640141	
7077	1829001	Sek. Men. Inggeris, Batu Pahat	7142	1735142	
7077	1829077	J.K.R. Quarry, Batu Pahat	7144	1836144	
7078*	1829078	J.P.T. Store, Batu Pahat	7145	1836145	
7079	1829079		7147	1837147	
7080	1829080		7148	1838148	
7081	1730081		7149*	1937149	
7082	1730082		7151	1933151	
7083	1731083		7152	2033152	
7084	1631084		7153*	2033153	J.P.T. Store, Kluang
7085	1730085		7154	2132154	
7091	1932001	Ayer Itam	7155	2033155	
7091	1932091	Nanyo Estate, Kluang	7156	2131156	
7092	1833092		7157	2133157	
7093	1833093		7158	2232158	
7094	1731094		7159	2132159	
7095	1632095		7160	2534160	Kg. Peta, Ulu Sg. Endau
7096	1632096		7162	2235162	
7101	1734001	Bukit Batu Treatment Plant	7163	2235163	
7101	1633101	Parit Lanchang, Ayer Baloi, Pontian	7164*	2237164	
7102	1635102		7168	2536168	
7103	1534103		7169	2636169	
7104	1534104		7170*	2636170	J.P.T. Store, Endau
7105	1433105		7181	2636181	
7106	1535106		7183	2537183	
7107*	1535107		7184*	2438001	Store J.P.T. Batu Tiga, Mersing
7108	1334108		7184	2438184	Agricultural Stn., Tenglu
7109	1636109		7185	2438185	
7110	1536110		7188*	2238188	
7111	1536111		7189	2238189	
7112*	1537112		7191	2037191	
7113	1537113		7194*	1938194	
7114	1537114		7195	1739195	
7115	1537115		7196	1839196	Had a Stn. No. 7146 Prior to 15/10/70
7116*	1437116	J.P.T. Store, Johore Bahru	7197	1840197	
7117	1538117				
7118	1438118	Buloh River Estate, J.B. (WS165763, 1931-1972)			

<i>Old No.</i>	<i>New No.</i>	<i>Remarks</i>	<i>Old No.</i>	<i>New No.</i>	<i>Remarks</i>
7198	1941198		8056	3819056	
7199*	1841199		8057	3818057	
7316	1437316	J.P.T. Store, Johore Bahru	8058	3920058	
7342	2125342	Kesang Tasek Pumphouse	8059	3918059	
7353	2033353	J.P.T. Store, Kluang	8060	3918060	
7370	2636370	J.P.T. Store, Endau	8061*	4019061	
7378	1829378	J.P.T. Store, Batu Pahat	8062	4020062	
7411	2527411		8063	4019063	
7414*	2528414		8064*	4120064	
7422*	2130422		8065	4020001	Paya Tampin
7423*	1931423		8065	4020065	29th mile, Benta-Kuantan Rd.
7451*	1737451		8066	4320066	
7452*	1836452		8067	4122067	
7453*	1834453		8068	3921068	
7454*	1836454		8069	3922069	
7455*	1836455		8070	3923070	
7456*	1739456	Sg. Sebol at Rd. Bridge	8071	3924071	
7457*	1739457		8072*	3924072	Paya Kangsar Pumphouse
7458*	1836458	Sg. Seluyut at Rd. Bridge	8073	3726073	
7461*	2039461		8074	3824001	Paya Gintong, Jerantut
7462*	1839462		8074	3824074	Sek. Keb., Kelola
7471*	2237471		8075	3823075	
7473*	2034473		8077	3723077	
8001	4033001		8078	3623078	
8002	4033002		8079	3523079	
8003	3933003		8080	3524080	
8004	3833004		8081*	3424081	J.P.T. Temerloh
8012*	3930012		8082	3324082	
8013	3931013		8083	3324083	
8014	3931014		8084	3223084	
8015	3832015		8085	3325085	
8016	3832016		8086	3325086	
8017	3833017		8087	3425087	
8018	3731018		8088	3425088	
8019	3732019		8089	3726089	
8020	3732020		8090	3626090	
8021	3732021		8091	3828091	Ulu Lepar Estate
8022*	3833022		8092	3527092	
8031	4514031		8093	3628093	
8032	4514032		8094	3527094	
8033	4413033	Quarry Rd., Brinching	8095*	3628095	
8033	4513033	Setesyen Talikom, Gunung Brinchang	8096	3429096	
8034*	4413034		8097	3430097	
8035	4413035		8098	3629098	
8036	4414036		8099	3431099	
8037	4414037		8100	3631100	
8038	4414038		8101	3532101	
8042	4218042		8102*	3533102	Pahang Tua Pumphouse, Pekan
8043	4218043		8103	3534103	
8044	4019044		8104	3633104	
8045	4620045		8105	3433105	
8047*	4419047		8106	3825106	
8048	4319048		8107	3626107	
8049	4219049		8109	3330109	Kg. Batu Gong
8050	3917050		8111	4525111	Kg. Kuala Sat.
8051	3717051		8111	4526111	Ulu Tembeling, Balai Penghulu
8052	3717052		8112	4424112	
8053	3918053		8113	4324113	
8054*	3818054	J.P.T. Store, Raub	8115*	4223115	
8055	3817055	Pimco Rubber Estate			
8055	3818055	Bt. Koman, Aust. Gold Mine			

<i>Old No.</i>	<i>New No.</i>	<i>Remarks</i>	<i>Old No.</i>	<i>New No.</i>	<i>Remarks</i>
8116	4123116		8413	4121413	Sg. Jelai at Kg. Jeram Bungor
8117	4023117		8414*	4219414	
8122	3718122		8415	4219415	Sg. Jelai at Bt. Betong
8123	3618123		8416	4218416	Sg. Jelai at Kuala Medang
8124	3518124		8417*	4514417	
8125*	3519125		8418*	4413418	
8126*	3318126		8421	3423421	Sg. Semantan at Railway Bridge
8127	3318127		8426*	3519426	
8129	3620129		8427*	3518427	
8130	3320130		8429*	3318429	
8131	3420131		8433	3224433	Sg. Triang at Triang Estate Rd. Bridge
8134	3421134		8441	3125441	Sg. Bera at Kemayan Timber
8135	3421135		8443	3024443	Sg. Seriting at Padang Gudang Rd. Bridge
8136	3522136		8450	4223450	Sg. Tembeling at Kg. Merting
8137	3523137		8451*	4023451	
8138	3423138		8452*	4424452	
8141	3221001	J.K.R. Kg. Manchis	8453*	4224453	
8141	3221141	J.K.R. Kg. Ponsoon	8454	4324454	Sg. Tembeling at Kuala Tahan
8142	3122142		8462*	4019462	
8143*	3121143		8466*	3917466	
8151	3123151		8467*	3817467	
8152	3223152		8468*	3717468	
8156*	3026156		8482	3029482	Sg. Rompin at Lubok Seribut
8158	3125158	Kemayan Timber	8484	2828484	Sg. Keratong at Timber Check Pt.
8161	3334161		8493	3231493	Sg. Serai at Kg. Uchang
8162	3234162		9001	5424001	
8163	3231163	Kg. Unchang	9002*	5524002	Sek. Keb. Panchor, Ulu Besut, Telemetric
8164	3230164	Kg. Bangkok	9002	5524003	Sek. Keb. Panchor, Ulu Besut
8165*	3134165		9003	5625003	
8167	3032167	Kg. Temeris	9004*	5625004	
8168	3034168		9005	5725005	I.I.'S Quarters, Jerteh
8173	2828173	Timber Check Pt., D/S Kg. Gambir	9006*	5725006	Kg. Raja Dispensary, Besut
8174	3228174	Sg. Chabang Kanan	9011	5625011	
8175	3229175	Ulu Sg. Gonoh	9012*	5626012	
8176	3230176	Asia Mining Area	9013	5726013	
8177	3129177	Bt. Ibam	9021*	5527021	
8178	3030178	Pecah Batu (Bt. Redan)	9023*	5527023	
8179	2831179	Kg. Kedaik	9024	5527024	
8180	2834180		9025*	5428025	
8181	2834181		9027*	5529027	
8183*	2734183	Paya Sepayang	9033*	5028033	
8184	2735184		9034*	5029001	Kg. Dura
8191	2841191		9034*	5029034	Kg. Dura Telemetric
8302	3533302	Padang Lallang, Kuantan	9035	5029035	
8322	3832301	Pahang Tua Pumphouse, Pekan	9036	5029036	
8354	3818354	J.P.T. Store, Raub	9038	4930001	Kg. Menerong Clinic, Ulu Trengganu
8372	3924372	Paya Kangsar Pumphouse	9038*	4930038	Kg. Menerong, Ulu Trengganu, Telemetric
8381	3424381	J.P.T. Store, Temerloh	9039*	5030039	
8383	2734383	Paya Sepayang	9040	5129040	
8401	3930401	Sg. Kuantan at Bt. Kenau	9041*	5230041	
8403	3629403	Sg. Lepar at Gelugor Bridge	9042	5230042	Pulau Musang Pumphouse
8404	3526404	Sg. Jempol at 59th Mile Rd. Bridge	9043*	5328043	
8405	3525405	Sg. Jengka at Kg. Awah	9044	5328001	Sek. Keb. Kg. Sg. Tong
8406	3825406	Sg. Tekam at Kg. Tekam Rd. Bridge	9044*	5328044	Sek. Keb. Sg. Tong, Telemetric
8409	3329409	Sg. Mentiga at Sg. Semarok	9046	5330046	
8410	3527410	Sg. Pahang at Lubok Paku	9047	5331047	
8411*	3424411				
8412	4023412	Sg. Pahang at Kg. Yap			

<i>Old No.</i>	<i>New No.</i>	<i>Remarks</i>	<i>Old No.</i>	<i>New No.</i>	<i>Remarks</i>
9048*	5331048		9096	4333096	
9049*	5430049		9103*	4231103	
9061	4931061		9104	4232104	
9062	5031062		9109*	4234109	
9063	5130064		9305	5725305	I.I.'S Quarters, Jerteh
9064	5131064		9306	5725306	Kg. Raja Dispensary, Besut
9065*	5232065		9342	5230342	Pulau Musang Pumphouse
9067*	4931067		9379	4734379	Sek. Menengah Ingggeris Dungun
9068*	4933001	Klinik Bidan Jambu Bongkok	9411	5724411	
9068*	4933068	Sek. Keb. Jambu Bongkok	9412*	5624412	
9069*	5033069		9413	5724413	
9070	4834001	Klinik Bidan Kuala Abang	9414	5624414	Sg. Besut at Barrage
9070	4834070	Sek. Keb. Kuala Abang	9421	5527421	
9071	4529071		9431*	5331431	
9076	4931076		9432*	5130432	
9077*	4832077		9433*	5029433	
9078	4833078		9434	5029434	Sg. Trengganu at Panchor Waterfall
9079*	4734079	Sek. Menengah Ingggeris Dungun	9441*	4831441	Sg. Dungun at Kg. Jerangau
9083*	4731083		9451	4232451	
9084	4733084		9452	4232452	Sg. Kemaman at Kg. Rantau Panjang Hilir
9085*	4634085		9453	4131453	Sg. Cherul at Ban Ho
9092*	4534092		9461	4732461	Sg. Paka at Kg. Luit
9093	4434093		4832441		Sg. Dungun at Jerangau Bridge
9094*	4334094				

APPENDIX C

INDEX OF OLD AND NEW STATION NUMBERS IN ORDER OF NEW NUMBERS

<i>New No.</i>	<i>Old No.</i>	<i>Remarks</i>	<i>New No.</i>	<i>Old No.</i>	<i>Remarks</i>
1334108	7108		1739195	7195	
1433105	7105		1739456	7456*	Sg. Sebol at Rd. Bridge
1437116	7116*	J.P.T. Store, Johore Bahru	1739457	7457*	
1437316	7316	J.P.T. Store, Johore Bahru	1829001	7077	Sek. Men. Ingeris, Batu Pahat
1438118	7118	Buloh River Estate, J.B. (WS165763, 1931-1972)	1829077	7077	J.K.R. Quarry, Batu Pahat
1439118	7118	Buloh River Estate, J.B. (WS174782, 1972-)	1829078	7078*	J.P.T. Store, Batu Pahat
1534103	7103		1829079	7079	
1534104	7104		1829080	7080	
1535106	7106		1829378	7378	J.P.T. Store, Batu Pahat
1535107	7107*		1830075	7075	
1536110	7110		1830076	7076	
1536111	7111		1831074	7074	
1537112	7112*		1833092	7092	
1537113	7113		1833093	7093	
1537114	7114		1833123	7123	
1537115	7115		1834122	7122	
1538117	7117		1834124	7124*	
1539134	7134		1834453	7453*	
1539136	7136		1836144	7144	
1540135	7135		1836145	7145	
1541001	7139	Kangkar Chemara	1836452	7452*	
1541137	7137		1836454	7454*	
1541138	7138		1836455	7455*	
1541139	7139*	Johor Selica	1836458	7458*	Sg. Seluyut at Rd. Bridge
1631084	7084		1837147	7147	
1632095	7095		1838148	7148	
1632096	7096		1839196	7196	Had a Stn. No. 7146 prior to 15/10/70
1633101	7101	Parit Lanchang, Ayer Baloi, Pontian	1839462	7462*	
1635102	7102		1840197	7197	
1636109	7109		1841199	7199*	
1637001	7133	L.K.T.P. Ulu Tiram/Ulu Terbau	1926001	7052	Parit Jawa Gate, Muar
1637133	7133	Ulu Tiram Estate	1926051	7051	
1639132	7132		1926052	7052	Parit Jamil Gate Site, Muar
1640141	7141		1927053	7053	
1730081	7081		1928065	7065	
1730082	7082		1929064	7064	
1730085	7085		1931001	7072*	2nd Mile Brizay Bridge, Yong Peng
1731083	7083		1931072	7072	Ayer Itam Agriculture Stn.
1731094	7094		1931073	7073	
1734001	7101	Bukit Batu Treatment Plant	1931423	7423*	
1735125	7125		1932001	7091	Ayer Itam
1735142	7142		1932091	7091	Nanyo Estate, Kluang
1736126	7126		1933121	7121	
1737127	7127*		1933151	7151	
1737128	7128		1937149	7149*	
1737451	7451*		1938194	7194*	
1738129	7129		1941198	7198	
1738131	7131		2025029	7029	
1739001	7130	27th mile Jln. J.B./Mersing (was listed as 71301)	2025030	7030	
1739130	7130	Permatang Estate, Kota Tinggi	2025031	7031	
			2027054	7054	
			2030001	7070	Sek. Men. Ingeris Yong Peng

<i>New No.</i>	<i>Old No.</i>	<i>Remarks</i>	<i>New No.</i>	<i>Old No.</i>	<i>Remarks</i>
2030070	7070	J.K.R. Waterworks, Yong Peng	2325021	7021	
2031067	7067		2325034	6034	
2031069	7069		2326020	7020	
2032071	7071		2326022	7022	
2033152	7152		2326023	7023	
2033153	7153*	J.P.T. Store, Kluang	2330009	7009*	
2033155	7155		2418034	5034	
2033353	7353	J.P.T. Store, Kluang	2419054	5054	
2034473	7473*		2420052	5052	
2037191	7191		2420053	5053	
2039461	7461*		2421003	6003	
2122411	6411*		2422002	6002	
2123024	6024		2422062	5062	
2124037	6037		2423001	6001	
2125028	7028		2424031	6031	
2125041	7041		2424087	5087	
2125042	7042*	Kesang Tasek Pumphouse	2426005	7005	
2125342	7342	Kesang Tasek Pumphouse	2428011	7011	
2126024	7024		2428013	7013	
2127017	7017		2429010	7010	
2127018	7018		2430008	7008	
2127025	7025		2438001	7184*	Store J.P.T. Batu Tiga, Mersing
2130068	7068				Agricultural Stn., Tenglu
2130422	7422*		2438184	7184	
2131156	7156		2438185	7185	
2132154	7154		2517033	5033	
2132159	7159		2519046	5046	
2133157	7157		2519421	5421*	
2221008	6008		2520049	5049	
2221009	6009		2520423	5423	
2222010	6010		2521050	5050	
2222011	6011		2522061	5061	
2222412	6412*		2524086	5086	
2223022	6022		2524416	5416	
2223023	6023		2525089	5089	
2224036	6036		2525415	5415	
2224038	6038*		2526001	7003	Fortrose Estate, Gemas
2224432	6432*		2526003	7003	Gemas Estate Home Div.
2225026	7026		2527004	7004	
2225027	7027		2527007	7007	
2225043	7043		2527411	7411	
2226019	7019		2528012	7012*	
2228016	7016		2528014	7014	
2230062	7062		2528414	7414*	
2232158	7158		2534160	7160	Kg. Peta, Ulu Sg. Endau
2235162	7162		2536168	7168	
2235163	7163		2537183	7183	
2237164	7164*		2615131	4131	
2237471	7471*		2615132	4132	
2238188	7188*		2616135	4135	
2238189	7189		2617032	5032	Overseer's Quarters, Chuah
2320005	6005		2617134	4134	
2321006	6006		2617332	5332	Overseer's Quarters, Chuah
2322004	6004*		2618044	5044	
2322413	6413		2619424	5424*	
2322414	6414		2620047	5047*	
2322415	6415*		2620048	5048	
2323007	6007*		2622078	5078	
2324032	6032		2622079	5079	
2324033	6033		2623085	5085	
2324035	6035		2623088	5088	
			2625084	5084	

<i>New No.</i>	<i>Old No.</i>	<i>Remarks</i>	<i>New No.</i>	<i>Old No.</i>	<i>Remarks</i>
2625412	5412*		2913121	4121	
2626002	7002		2913122	4122	
2636169	7169		2914120	4120	
2636170	7170*	J.P.T. Store, Endau	2915116	4116	
2636181	7181		2916077	4077	
2636370	7370	J.P.T. Store, Endau	2917105	4105*	
2717114	4114		2917106	4106	
2717133	4133		2917111	4111	
2718005	5005		2917442	4442*	
2719001	5043*	J.P.T. Store, Sikamat, Seremban	2918108	4108	
2719043	5043	Astana Hinggap, Seremban	2918109	4109	
2719301	5343	J.P.T. Store, Sikamat, Seremban	2918443	4443*	
2719422	5422		2920012	5012*	
2720041	5041	Kg. Bahru Pantai	2920432	5432	
2721073	5073		2921013	5013	
2722001	5074*	Residential Area, Kuala Pilah	2922017	5017	
2722002	5074*	Kg. Sawah Lebar	2922018	5018	
2722074	5074	Kuala Pilah Hospital	2924096	5096	
2722413	5413		3014081	4081	
2723075	5075		3014083	4083	
2724076	5076		3014084	4084	
2724082	5082		3014089	4089	
2725083	5083*		3014090	4090*	
2725094	5094		3015074	4074	
2734183	8183*	Paya Sepayang	3015078	4078	
2734383	8383	Paya Sepayang	3015080	4080	
2735184	8184		3015082	4082	
2814117	4117		3015431	4431*	
2814118	4118		3016075	4075	
2815001	4115*	J.P.T. Sg. Manggis	3016076	4076	
2815115	4115	Brooklands Estate	3017104	4104	
2815301	4315	J.P.T. Sg. Manggis	3017444	4444*	
2816112	4112		3018107	4107	
2816441	4441*		3020016	5016	
2817448	4448*		3022431	5431	
2818003	5003		3023098	5098	
2818004	5004		3024443	8443	Sg. Serting at Padang Gudang Rd. Bridge
2818110	4110*	Kg. Jln. Enam Kaki Beranang	3026156	8156*	
2818310	4310	Kg. Jln. Enam Kaki Beranang	3029482	8482	Sg. Rompin at Lubok Seribut Pecah Batu (Bt. Redan)
2819001	5001		3030178	8178	Kg. Temeris
2819002	5002		3032167	8167	
2820011	5011		3034168	8168	
2820014	5014*		3113059	4059	
2820041	5041	Seremban Waterworks (Pantai Intake)	3113087	4087	
2820042	5042*	Pantai Headworks, Approx. Same Loc. as 2820041	3114085	4085	
2823091	5091		3114086	4086	
2823092	5092		3115053	4053	
2824093	5093		3115079	4079	
2824095	5095		3115437	4437*	
2828173	8173	Timber Check Pt., D/S Kg. Gambir	3116001		J.P.T. Selangor Office (Flood Warning)
2828484	8484	Sg. Keratong at Timber Check Pt.	3116072	4072	
2831179	8179	Kg. Kedaik	3116073	4073	
2834180	8180		3116430	4430	Sg. Klang at Sulaiman Bridge, K.L.
2834181	8181		3116432	4432*	Sg. Klang at Market St., K.L.
2841191	8191		3116433	4433*	
2913001		Telok Gong, Drainage Gate	3116434	4434*	
			3117066	4066	
			3117070	4070*	J.P.T. Research Stn. Ampang
			3117071	4071	

<i>New No.</i>	<i>Old No.</i>	<i>Remarks</i>	<i>New No.</i>	<i>Old No.</i>	<i>Remarks</i>
3117370	4370	J.P.T. Research Stn. Ampang	3313039	4039	
3117401		Sg. Klang at Cambell Rd.	3313040	4040	
3117438	4438	Sg. Klang at Kg. Baharu	3313043	4043	
3118069	4069		3313056	4056	
3118102	4102*	Sg. Lui Std. Catchment, Sek. Keb.	3313060	4060	
3118445	4445*		3314001		J.P.T. Pumphouse, Jaya Setia
3118447	4447*		3314037	4037	
3119001		Sg. Lui Std. Catchment, Sawah	3314038	4038	
3119002		Sg. Lui Std. Catchment, Lallang	3315024	4024	
3119003		Sg. Lui Std. Catchment, Lawin (Bkt.)	3315032	4032	
3120436	5436*		3315033	4033	
3121143	8143*		3315034	4034	
3122001	5020*	Simpang Durian Triang Ilir	3315036	4036	
3122020	5020	Simpang Durian Estate	3316028	4028	
3122021	5021		3317001		Ulu Gombak 13th mile (Flood Warning)
3122142	8142		3317001	4063*	16th Mile Ulu Gombak, J.K.R.
3123151	8151		3317063	4063	16th Mile Ulu Gombak, J.P.T.
3125158	8158	Kemayan Timber	3317436	4436*	
3125441	8441	Sg. Bera at Kemayan Timber	3318126	8126*	
3129177	8177	Bt. Ibam	3318127	8127	
3134165	8165*		3318429	8429*	
3213057	4057		3320130	8130	
3213058	4058		3324082	8082	
3214054	4054		3324083	8083	
3214055	4055		3325085	8085	
3215035	4035		3325086	8086	
3215051	4051		3329409	8409	Sg. Mentiga at Sg. Semarok
3216001		Kg. Sg. Tua (Flood Warning)	3330109	8109	Kg. Batu Gong
3216002		F.R.I. Kepong, Semaian	3334161	8161	
3216003		F.R.I. Office, Kepong (Flood Warning)	3411016	4016	
3216052	4052		3411017	4017*	
3216061	4061		3412041	4041	
3216062	4062		3414029	4029	
3216439	4439	Sg. Batu at Kg. Tua	3414030	4030	
3217001		Batu 10 Gombak J.P.T. Headworks (Flood Warning)	3414031	4031*	
3217002		Genting Kelang (Flood Warning)	3414421	4421*	
3217064	4064		3416025	4025	
3217065	4065		3416026	4026	
3217067	4067		3420131	8131	
3217435	4435*		3421134	8134	
3218101	4101		3421135	8135	
3221001	8141	J.K.R. Kg. Manchis	3423138	8138	
3221141	8141	J.K.R. Kg. Ponsoon	3423421	8421	Sg. Semantan at Railway Bridge
3223084	8084		3424081	8081*	J.P.T. Temerloh
3223152	8152		3424381	8381	J.P.T. Store Temerloh
3224433	8433	Sg. Triang at Triang Estate Rd. Bridge	3424411	8411*	
3228174	8174	Sg. Chabang Kanan	3425087	8087	
3229175	8175	Ulu Sg. Gonoh	3425088	8088	
3230164	8164	Kg. Bangkok	3429096	8096	
3230176	8176	Asia Mining Area	3430097	8097	
3231163	8163	Kg. Unchang	3431099	8099	
3231493	8493	Sg. Serai at Kg. Uchang	3433105	8105	
3234162	8162		3510015	4015	
3312042	4042		3515027	4027	
3312044	4044		3516022	4022*	Kuala Kubu Baru Reservoir
3312045	4045		3516023	4023	
			3516322	4322	Kuala Kubu Baru Reservoir
			3516422	4422*	

<i>New No.</i>	<i>Old No.</i>	<i>Remarks</i>	<i>New No.</i>	<i>Old No.</i>	<i>Remarks</i>
3517021	4021		3732019	8019	
3517423	4423*		3732020	8020	
3518124	8124		3732021	8021	
3518427	8427*		3808163	3163	
3519125	8125*		3809009	4009	
3519426	8426*		3809162	3162	
3522136	8136		3813158	3158	
3523079	8079		3813411	4411*	
3523137	8137		3813414	3414*	
3524080	8080		3814156	3156	
3525405	8405	Sg. Jengka at Kg. Awah	3814157	3157	
3526404	8404	Sg. Jempol at 59th Mile Rd. Bridge	3814413	3413*	
3527092	8092		3814415	3415	
3527094	8094		3814416	3416*	
3527410	8410	Sg. Pahang at Lubok Paku	3817055	8055	Pimco Rubber Estate
3532101	8101		3817467	8467*	
3533102	8102*	Pahang Tua Pumphouse, Pekan	3818054	8054*	J.P.T. Store, Raub
3533302	8302	Pahang Tua Pumphouse, Pekan	3818055	8055	Bt. Koman, Aust. Gold Mine
3534103	8103		3818057	8057	
3609012	4012		3818354	8354	J.P.T. Store, Raub
3609013	4013	J.P.T. Office, Sg. Besar	3819056	8056	
3609313	4313	J.P.T. Office, Sg. Besar	3823075	8075	
3610014	4014		3824001	8074	Paya Gintong, Jerantut
3613004	4004*		3824074	8074	Sek. Keb., Kelola
3613005	4005		3825106	8106	
3614018	4018		3825406	8406	Sg. Tekam at Kg. Tekam Rd. Bridge
3615001	4001		3828091	8091	Ulu Lepar Estate
3615001	3151*	Pekan Tanjung Malim	3832001		Padang Lallang, Kuantan
3615002	4002		3832015	8015	
3615151	3151	Tanjung Malim Hospital	3832016	8016	
3615412	4412*		3832301	8322	Padang Lallang, Kuantan
3616426	4426*		3833004	8004	
3618123	8123		3833017	8017	
3620129	8129		3833022	8022*	
3623078	8078		3907103	3103	
3626090	8090		3907441	3441*	
3626107	8107		3908101	3101	
3628093	8093		3909100	3100	
3628095	8095*		3909104	3104	
3629098	8098		3910099	3099	
3629403	8403	Sg. Lepar at Gelugor Bridge	3911149	3149	
3631100	8100		3911457	3457	
3633104	8104		3913145	3145	
3709008	4008		3913146	3146	
3710006	4006*	Bagan Terap Pumphouse	3913147	3147	
3710011	4011	Parit Enam, Sg. Besar	3913458	3458*	
3710306	4306	Bagan Terap Pumphouse	3917050	8050	
3710311	4311	Parit Enam, Sg. Besar	3917466	8466*	
3711160	3160		3918053	8053	
3713003	4003		3918059	8059	
3714152	3152		3918060	8060	
3714153	3153		3920058	8058	
3717051	8051		3921068	8068	
3717052	8052		3922069	8069	
3717468	8468*		3923070	8070	
3718122	8122		3924071	8071	
3723077	8077		3924072	8072*	Paya Kangsar Pumphouse
3726073	8073		3924372	8372	Paya Kangsar Pumphouse
3726089	8089		3930012	8012*	
3731018	8018		3930401	8401	Sg. Kuantan at Bt. Kenau
			3931013	8013	

<i>New No.</i>	<i>Old No.</i>	<i>Remarks</i>	<i>New No.</i>	<i>Old No.</i>	<i>Remarks</i>
3931014	8014		4213453	3453*	Sg. Woh at U/S Sg. Telom
3933003	8003		4218042	8042	
4008102	3102		4218043	8043	
4009096	3096		4218416	8416	Sg. Jelai at Kuala Medang
4010001	3098*	J.P.T. Telok Anson	4219049	8049	
4010097	3097		4219414	8414*	
4010098	3098	Telok Anson Hospital	4219415	8415	Sg. Jelai at Bt. Betong
4010138	3138		4223115	8115*	
4010150	3150		4223450	8450	Sg. Tembeling at Kg. Merting
4010301	3398	J.P.T. Telok Anson	4224453	8453*	
4011139	3139		4231103	9103*	
4011144	3144		4232104	9104	
4011451	3451		4232451	9451	
4012142	3142		4232452	9452	Sg. Kemaman at Kg. Rantau Panjang Hilir
4012143	3143*		4234109	9109*	
4012452	3452		4306039	3039	
4012453	3453*	Sg. Bidor at Bidor Tin Deviation	4306040	3040	
4019044	8044		4306042	3042	
4019061	8061*		4307041	3041	
4019063	8063		4307043	3043	
4019462	8462*		4309092	3092	
4020001	8065	Paya Tampin	4310401		Sg. Kinta at Weir G, Tg. Tualang
4020062	8062		4311126	3126	
4020065	8065	29th Mile, Benta-Kuantan Rd.	4311127	3127	
4023117	8117		4311464	3464*	
4023412	8412	Sg. Pahang at Kg. Yap	4313130	3130	
4023451	8451*		4319048	8048	
4033001	8001		4320066	8066	
4033002	8002		4324113	8113	
4106047	3047	Pundut Estate	4324454	8454	Sg. Tembeling at Kuala Tahan
4109094	3094		4333096	9096	
4109095	3095		4334094	9094*	
4110129	3129		4406049	3049	
4110136	3136		4407038	3038	
4111134	3134		4409090	3090	
4111135	3135		4409091	3091*	
4111137	3137*		4409121	3121	
4111455	3455*		4410120	3120	
4112141	3141		4410122	3122	
4112454	3454*	Sg. Bidor at Bidor	4410123	3123	
4112456	3456*		4410461	3461*	
4112459	3459*		4410465	3465*	
4120064	8064*		4411001	3119*	Gopeng Dam
4121413	8413	Sg. Jelai at Kg. Jeram Bungor	4411119	3119	Gopeng Hospital
4122067	8067		4411301	3319	Gopeng Dam
4123116	8116		4413033	8033	Quarry Rd., Brinching
4131453	9453	Sg. Cherul at Ban Ho	4413034	8034*	
4205047	3047	Pasir Bogak	4413035	8035	
4206045	3045		4413418	8418*	
4206046	3046		4414036	8036	
4207001		M.M.S. Sitiawan	4414037	8037	
4207044	3044		4414038	8038	
4207048	3048*		4419047	8047*	
4209001	3093	Telok Sareh Pumphouse	4424112	8112	
4209093	3093*	Telok Sena, J.P.T. Trans-Perak	4424452	8452*	
4209301	3393	J.P.T., Telok Sena	4434093	9093	
4212128	3128		4507036	3036	
4212133	3133		4507037	3037	
4212467	3467*		4508086	3086	
4213131	3131		4508087	3087	
4213132	3132				

<i>New No.</i>	<i>Old No.</i>	<i>Remarks</i>	<i>New No.</i>	<i>Old No.</i>	<i>Remarks</i>
4509088	3088		4831441	9441*	Sg. Dungun at Kg. Jerangau
4510116	3116*	J.P.T. Kinta Ipoh	4832077	9077*	
4510117	3117		4832441		Sg. Dungun at Jerangau Bridge
4510462	3462		4833078	9078	
4511111	3111*		4834001	9070	Klinik Bidan Kuala Abang
4511118	3118		4834070	9070	Sek. Keb. Kuala Abang
4511468	3468*		4904026	3026	
4513033	8033	Setesyen Talikom, Gunung Brinchang	4905023	3023	
			4906022	3022	
4514031	8031		4907013	3013	Lingerwood Estate Krian
4514032	8032		4907017	3017	
4514417	8417*		4907019	3019	
4525111	8111	Kg. Kuala Sat.	4907422	3422	
4526111	8111	Ulu Tembeling, Balai Penghulu	4908013	3013	Sempeneh Headworks Batu Kurau
4529071	9071				
4534092	9092*		4908018	3018*	
4609001	3085	Empang Lempor	4909072	3072	Chendroh Dam
4609085	3085*	Senggang Estate	4909073	3073	
4610112	3112		4909372	3372	Chendroh Dam
4610116	3116	Ipoh Hospital	4910077	3077	
4610466	3466*		4911076	3076	Kg. Lintang Police Station
4611001		National Stud Farm, Ulu Kinta	4911445	3445	
4611114	3114*		4930001	9038	Kg. Menerong Clinic, Ulu Trengganu
4611115	3115				
4611463	3463*		4930038	9038*	Kg. Menerong, Ulu Trengganu, Telemetric
4620045	8045				
4634085	9085*		4931061	9061	
4707033	3033		4931067	9067*	
4707034	3034		4931076	9076	
4707035	3035		4933001	9068*	Klinik Bidan Jambu Bongkok
4708082	3082		4933068	9068*	Sek. Keb. Jambu Bongkok
4708083	3083		5003028	3028	Tg. Piandang Padi Test Stn.
4708084	3084*	Talang Headworks, Kuala Kangsar	5003328	3328	Tanjong Piandang Padi Test Stn.
			5004027	3027	
4708384	3384	Talang Headworks, Kuala Kangsar	5005001	3025*	J.P.T. Bagan Serai
4709001	3084*	J.P.T. Kuala Kangsar	5005002	—	Alor Pongsu Overseer's Quarters
4709084	3084	Kuala Kangsar Hospital			
4710081	3081		5005003	—	I.I.'s Quarters Jln. Anderson, Bagan Serai
4711113	3113				
4720026	0026		5005010	3010	
4731083	9083*		5005025	3025	Bagan Serai Waterworks J.K.R.
4732461	9461	Sg. Paka at Kg. Luit	5005302	3309	Alor Pongsu Overseer's Quarters
4733084	9084				
4734079	9079*	Sek. Menengah Ingggeris Dungun	5005303	3325	I.I.'s Quarters Jln. Anderson, Bagan Serai
			5006009	3009	Hock Estate Alor Pongsu
4734379	9379	Sek. Menengah Ingggeris Dungun	5006021	3021	Bukit Merah Reservoir
			5006321	3321	Bukit Merah Reservoir
4806032	3032		5007020	3020	
4807014	3014		5007029	3029	
4807015	3015		5007421	3421*	
4807016	3016*		5007423	3423	
4807031	3031		5009071	3071	
4809443	3443*		5020030	0030	
4810076	3076*	Kg. Pulau Mentimum	5028033	9033*	
4810079	3079		5029001	9034*	Kg. Dura
4810080	3080		5029034	9034*	Kg. Dura Telemetric
4810444	3444*		5029035	9035	
4811075	3075		5029036	9036	
4811078	3078		5029433	9433*	
4819001	0027*	Gua Musang	5029434	9434	Sg. Trengganu at Panchor Waterfall
4819027	0027*	Gua Musang Telemetric	5030039	9039*	

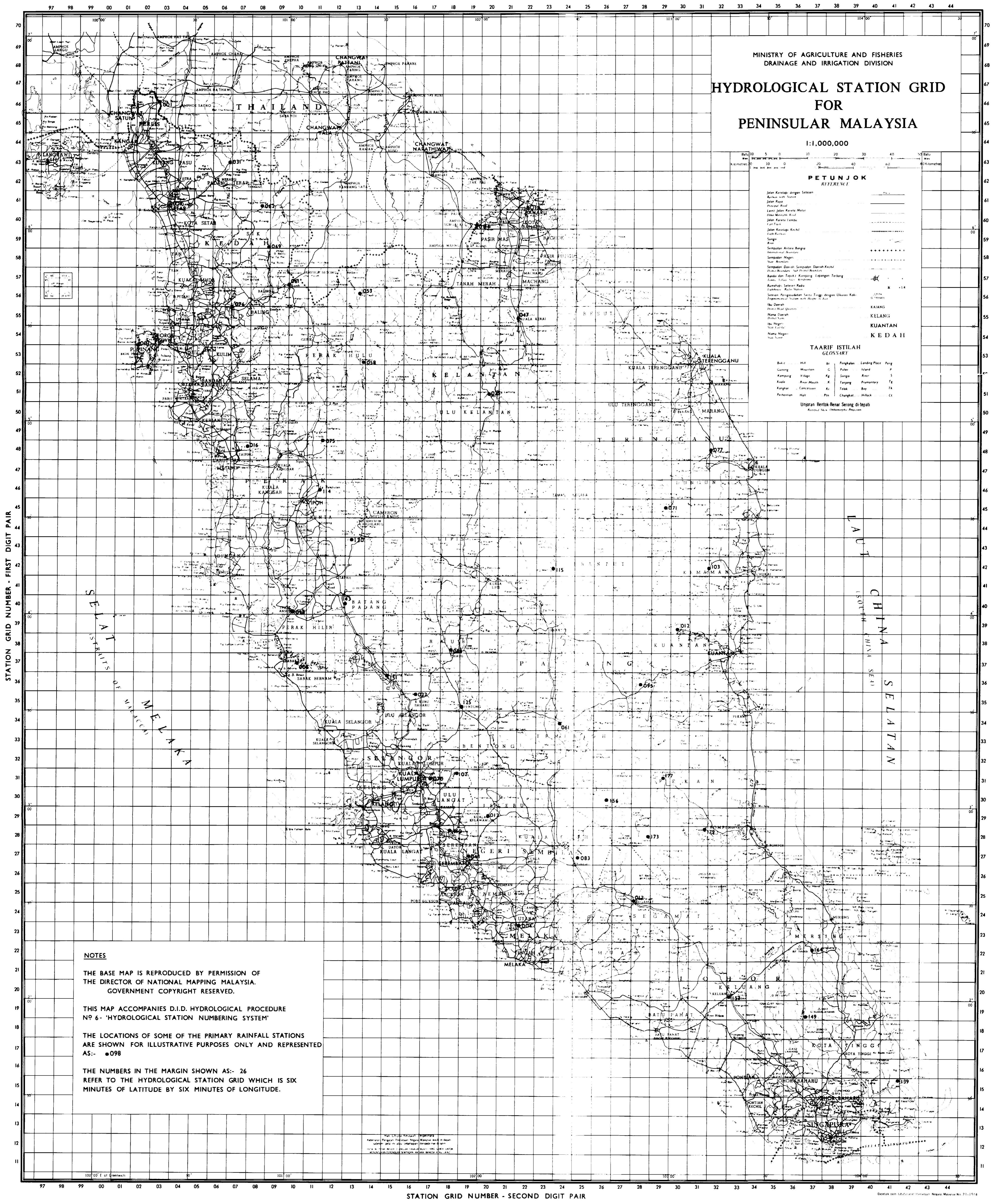
<i>New No.</i>	<i>Old No.</i>	<i>Remarks</i>	<i>New No.</i>	<i>Old No.</i>	<i>Remarks</i>
5031062	9062		5322044	0044*	
5033069	9069*		5322045	0045	Manek Urai Railway Stn.
5104011	3011		5322453	0453	
5104012	3012		5328001	9044	Sek. Keb. Kg. Sg. Tong
5104052	2052		5328043	9043*	
5105051	2051*		5328044	9044*	Sek. Keb. Kg. Sg. Tong, Telemetric
5105105	1105		5330046	9046	
5105106	1106		5331047	9047	
5106003	3003*	Dusun Limau Cableway	5331048	9048*	
5106004	3004		5331431	9431*	
5106008	3008		5402011	2011	
5106104	1104		5403042	2042	
5106431	3431*		5404041	2041	
5106433	3433		5404043	2043*	
5107006	3006		5404044	2044	
5107007	3007		5405421	2421*	
5108005	3005		5406081	1081	
5109070	3070		5406083	1083	
5119024	0024		5407080	1080	
5119445	0445*		5411066	3066*	
5120025	0025*		5411068	3068	
5129040	9040		5411446	3446*	
5130064	9063		5412059	3059*	
5130432	9432*		5412060	3060*	
5131064	9064		5412067	3067*	
5202021	2021		5412447	3447*	
5204048	2048		5419036	0036	
5204049	2049		5422046	0046	
5204422	2422*		5424001	9001	
5205050	2050		5428025	9025*	
5206003	3003	Selama Dispensary	5430049	9049*	
5206102	1102		5503031	2031	
5206103	1103		5503034	2034	Permatang Binjai
5206432	3432*		5504032	—	Bumbong Lima Pumphouse
5207001	—	Selama, J.K.R. Reservoir	5504034	2034	Permatang Sintok
5207002	3002		5504035	2035*	
5210069	3069*		5504085	1085	
5220031	0031	Kemubu Railway Stn.	5504332	2332	Bumbong Lima Pumphouse
5222452	0452	Sg. Lebir at Kg. Tualang	5505033	2033	
5230041	9041*		5505084	1084	
5230042	9042	Pulau Musang Pumphouse	5505412	2412*	Sg. Muda at Victor Estate
5230342	9342	Pulau Musang Pumphouse	5506078	1078	
5232065	9065*		5506082	1082	
5302001	2001*		5506413	2413*	Sg. Muda at Batu Pekaka
5302002	2002		5506416	2416	
5303022	2022*		5506417	2417	
5303053	2053*		5507076	1076	
5304045	2045		5507079	1079	
5304046	2046		5513054	3054*	
5304047	2047		5518035	0035	
5305001	1092	Kampung Dusun	5521049	0049	
5305091	1091		5521050	0050	
5305092	1092	Bt. Besar, Kulim	5521444	0444	Sg. Kelantan at Kuala Krai
5307101	1101		5522047	0047*	
5313058	3058*		5524002	9002*	Sek. Keb. Panchor, Ulu Besut, Telemetric
5320001	0038	Dabong Agriculture Stn.	5524003	9002	Sek. Keb. Panchor, Ulu Besut
5320002	0039	Kuala Gris Estate	5527021	9021*	
5320037	0037		5527023	9023*	
5320038	0038*	Dabong Telemetric	5527024	9024	
5320039	0039	Bukit Abu Railway Stn.	5527421	9421	
5320443	0443*				
5322001	0045	Manek Urai Police Stn.			

<i>New No.</i>	<i>Old No.</i>	<i>Remarks</i>	<i>New No.</i>	<i>Old No.</i>	<i>Remarks</i>
5529027	9027*		5807067	1067	
5604001	1059	J.P.T. Store Sg. Petani	5808001	1069*	61st mile, Jln. Baling
5604002	1059	Kawasan Jabatan Penjara Sg. Petani	5808069	1069	62nd mile, Jln. Baling
5604059	1059	Rumah Sakit Sg. Petani	5808070	1070	
5606077	1077		5819002	0002	
5606410	1410	Sg. Muda at Syed Omar Bridge	5820005	—	Pejabat Pertanian Batang Merbau
5608074	1074		5820305	0305	Pejabat Pertanian Batang Merbau
5609072	1072		5821007	0007	
5609073	1073		5821059	0059	
5610062	3062		5823001	—	Tiga Daerah Headworks
5610063	3063*		5823076	0076	
5613053	3053		5823077	0077	
5617031	0031	Kuala Sg. Yong	5823301	0377	Tiga Daerah Headworks
5618033	0033	Jeli Forest Checking Stn.	5824079	0079*	
5621051	0051		5824080	0080	
5621052	0052		5903151	—	Kuala Sala Tidal Gate
5621053	0053		5903351	1351	Kuala Sala Tidal Gate
5622048	0048		5904043	1043	
5624412	9412*		5904051	1051	
5624414	9414	Sg. Besut at Barrage	5904152	—	Simpang Tiga, Sg. Limau
5625003	9003		5904352	1352	Simpang Tiga, Sg. Limau
5625004	9004*		5905042	1042	
5625011	9011		5919003	0003	
5626012	9012*		5920008	0008	
5704054	1054		5920011	0011	
5704055	1055		5921009	0009	
5704056	1056	Sek. Menengah Gurun	5922001	0075	Melor Agriculture Stn.
5704057	1057		5922075	0075	Melor Penggawa's Office
5704058	1058		5923081	0081	
5708071	1071		6003049	1049	
5710061	3061*		6004045	1045	
5717033	0032		6005044	1044	
5717448	0448*		6007063	1063*	
5718001	0001		6007415	1415*	
5718033	0033*	Jeli Telemetric	6019004	0004*	
5720055	0055		6019411	0411*	
5721001	0054	Temangan Local Council	6020012	0012	
5721002	0058	Tebing Tinggi Estate	6021010	0010	
5721054	0054	Temangan Railway Stn.	6021013	0013	
5721058	0058	Tanah Merah Railway Stn.	6021060	0060	
5721442	0442*		6021061	0061*	Pasir Mas Pumphouse
5722057	0057*		6021361	0361	Pasir Mas Pumphouse
5723056	0056		6022062	0062	
5724001	0078	Sek. Keb. Wakaf Raja, Bt. Yong	6022421	0421*	
5724002	0078	Kg. Wakaf Raja	6023071	0071	
5724078	0078	Balai Polis Stn. Bukit Yong	6023072	0072	
5724411	9411		6023073	0073	
5724413	9413		6024074	0074	
5725005	9005	I.I.'s Quarters, Jerteh	6103047	1047*	
5725006	9006*	Kg. Raja Dispensary, Besut	6103048	1048	
5725305	9305	I.I.'s Quarters, Jerteh	6105037	1037	Gajah Mati
5725306	9306	Kg. Raja Dispensary, Besut	6105038	1038	
5726013	9013		6105337	1337	Gajah Mati
5803052	1052		6106034	1034*	
5804053	1053*		6108001	1062	Muda Housing Complex
5804056	1056	Gurun Quarry	6108062	1062	Muda Dam
5806065	1065		6108301	—	Muda Housing Complex
5806066	1066*	Jeniang	6108362	1362	Muda Dam
5806366	1366	Jeniang	6108411	1411	Sg. Muda at Muda Dam
5806414	1414*		6120014	0014	

<i>New No.</i>	<i>Old No.</i>	<i>Remarks</i>	<i>New No.</i>	<i>Old No.</i>	<i>Remarks</i>
6121015	0015*		6303122	—	Megat Dewa
6121063	0063		6303322	1322	Megat Dewa
6121066	0066		6304026	1026	
6121067	0067		6304027	1027	
6122064	0064*		6305029	1029	
6122065	0065		6306031	1031*	
6122068	0068		6397111	1111*	J.P.T. Quarters, Padang Masirat, P. Langkawi
6122441	0441*		6397112	1112	
6202001	1011	Kuala Sanglang Tidal Gate	6397311	1311	J.P.T. Quarters, Padang Masirat, P. Langkawi
6202011	1011	Kg. Sanglang	6398121	1121	
6202301	1312	Kuala Sanglang Tidal Gate	6398131	1131	
6203024	1024		6401001	1008*	Kg. Behor, Kangar
6203124	—	Jitra (Telaga Batu)	6401008	1008*	J.P.T. Store, Kangar
6203324	1324	Jitra (Telaga Batu)	6401308	1308	Kg. Behor, Kangar
6204022	1022		6402006	1006	
6204023	1023*	Jitra Test Plot Stn.	6402007	1007	
6204028	1028		6402434	1434	
6204039	1039		6402435	1435	
6204323	1323	Jitra Test Plot Stn.	6403025	1025	
6204420	1420	Sg. Padang Terap at Pelubong Headworks	6501004	1004	
6204421	1421*		6501005	1005	
6205036	1036		6502003	1003	
6206035	1035*		6502010	1010	
6207032	1032*	Pedu Dam	6502431	1431	
6207033	1033		6502432	1432	
6207332	1332	Pedu Dam	6502433	1433	
6207427	1427	Sg. Pedu at Pedu Dam	6602002	1002	
6301009	1009		6603001	1001*	
6302021	1021				

PROCEDURE PREVIOUSLY PUBLISHED

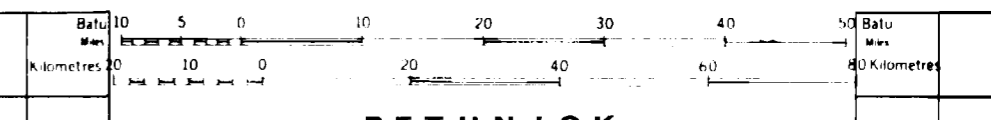
1. Estimation of the Design Rainstorm 1973
2. Water Quality Sampling for Surface Water 1973
3. A General Purpose Event Water Level Recorder 1973
4. Magnitude and Frequency of Floods in Peninsular Malaysia 1974
5. Rational Method of Flood Estimation (For Rural Catchment) 1974



MINISTRY OF AGRICULTURE AND FISHERIES
DRAINAGE AND IRRIGATION DIVISION

HYDROLOGICAL STATION GRID FOR PENINSULAR MALAYSIA

1:1,000,000



PETUNJUK REFERENCE

- Jalan Keraja dengan Setoran Rata-rata (Main Road)
- Jalan Raya (Federal Road)
- Sekali Jalan Keraja (Federal Road)
- Jalan Keraja Lembut (Federal Road)
- Jalan Keraja Keras (Federal Road)
- Sungai (River)
- Sempadan Air (River Bank)
- Sempadan (River Bank)
- Sempadan Dalam (River Bank)
- Sempadan Luar (River Bank)
- Bandar dan Tapak (Town and Site)
- Rumahnya (House)
- Sistem Pengaliran (Irrigation System)
- Ulu Daerah (District Head)
- Nama Daerah (District Name)
- Nama Negeri (State Name)
- Nama Negeri (State Name)
- Nama Negeri (State Name)
- Nama Negeri (State Name)

TAARIF ISTILAH GLOSSARY

Bukit	Mountain	Br	Pengaliran	Landing Place	Peng
Daerah	District	D	Pulau	Island	P
Kampung	Village	Kg	Sungai	River	S
Kuala	River Mouth	K	Tanjung	Peninsular	Tj
Kuaran	Quarry	Ku	Teluk	Bay	Te
Perumahan	House	Pr	Chungku	Block	Ch

Ungkapan Bentuk Renai Serong di Tepi (Sloped Landmark Shape at Edge)

NOTES

- THE BASE MAP IS REPRODUCED BY PERMISSION OF THE DIRECTOR OF NATIONAL MAPPING MALAYSIA. GOVERNMENT COPYRIGHT RESERVED.
- THIS MAP ACCOMPANIES D.I.D. HYDROLOGICAL PROCEDURE NO 6 - 'HYDROLOGICAL STATION NUMBERING SYSTEM'
- THE LOCATIONS OF SOME OF THE PRIMARY RAINFALL STATIONS ARE SHOWN FOR ILLUSTRATIVE PURPOSES ONLY AND REPRESENTED AS:- ●098
- THE NUMBERS IN THE MARGIN SHOWN AS:- 26 REFER TO THE HYDROLOGICAL STATION GRID WHICH IS SIX MINUTES OF LATITUDE BY SIX MINUTES OF LONGITUDE.

NOTES
Keterangan: Peta asas ini diterbitkan dengan kebenaran daripada Peta Negara Malaysia dan Hak Cipta Kerajaan Terpeliharakan.
Peta ini menyertai Prosedur Hidrologi No 6 - 'SISTEM PENOMBORAN STASI Hidrologi'.